

[NHDOT PROJECT WEBSITE](#)

[CONTACT THE TEAM](#)

**Lyme-East Thetford Bridge 14460
Rehabilitation Project**



The countdown is on! The end of construction is near, and the Lyme-East Thetford bridge is almost ready to reopen. **The Lyme-East Thetford bridge is on track to reopen by November 15, 2024.** Please stay tuned for an official bridge reopening announcement!

Please remember that until the bridge reopens, the bridge and work area remains closed to motorists, pedestrians, and bicyclists 24 hours a day, seven days a week. This closure is in place for everyone's safety.

Project Milestones

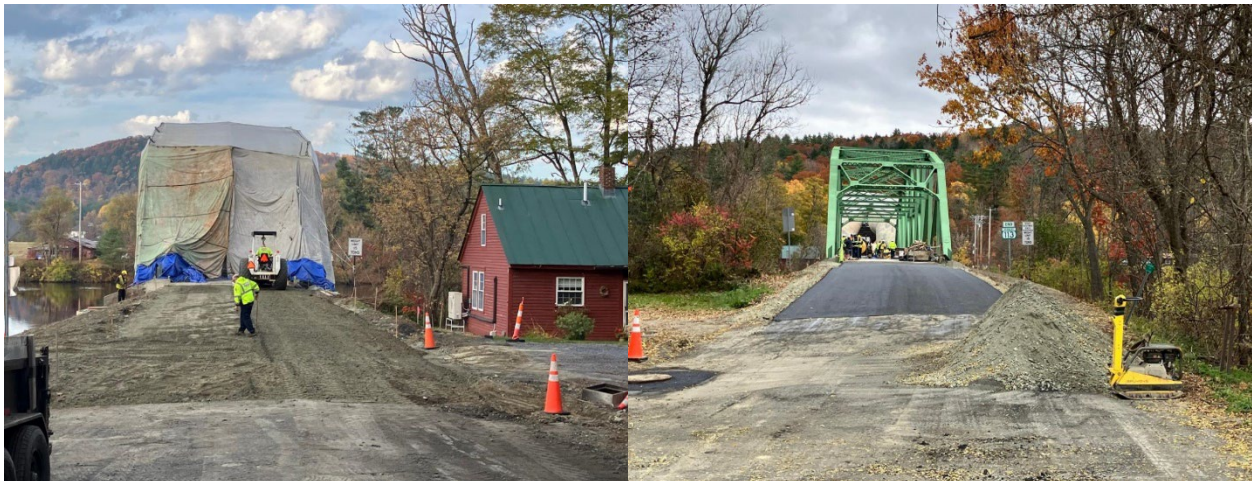
Crews have completed the painting of Span 1 on the Vermont side of the bridge. The painting of Span 2, on the New Hampshire side, is in progress. The painting process includes multiple layers, including the primer, intermediate, stripe, and final layer coat.

What to Expect this Coming Month

Crews will continue working on the bridge guardrail and granite curbing at each approach. Crews will also remove equipment from the project staging area as the bridge prepares for reopening.

All work is weather-dependent. The bridge rehabilitation is expected to reopen by Friday, November 15, 2024.

Recent bridge rehabilitation progress photos are below.



*Preparing for pavement at the NH
bridge approach*

*View of the newly painted bridge
from the VT approach*



Span 1 painting

Tarp over the bridge during painting



Look at the cofferdam

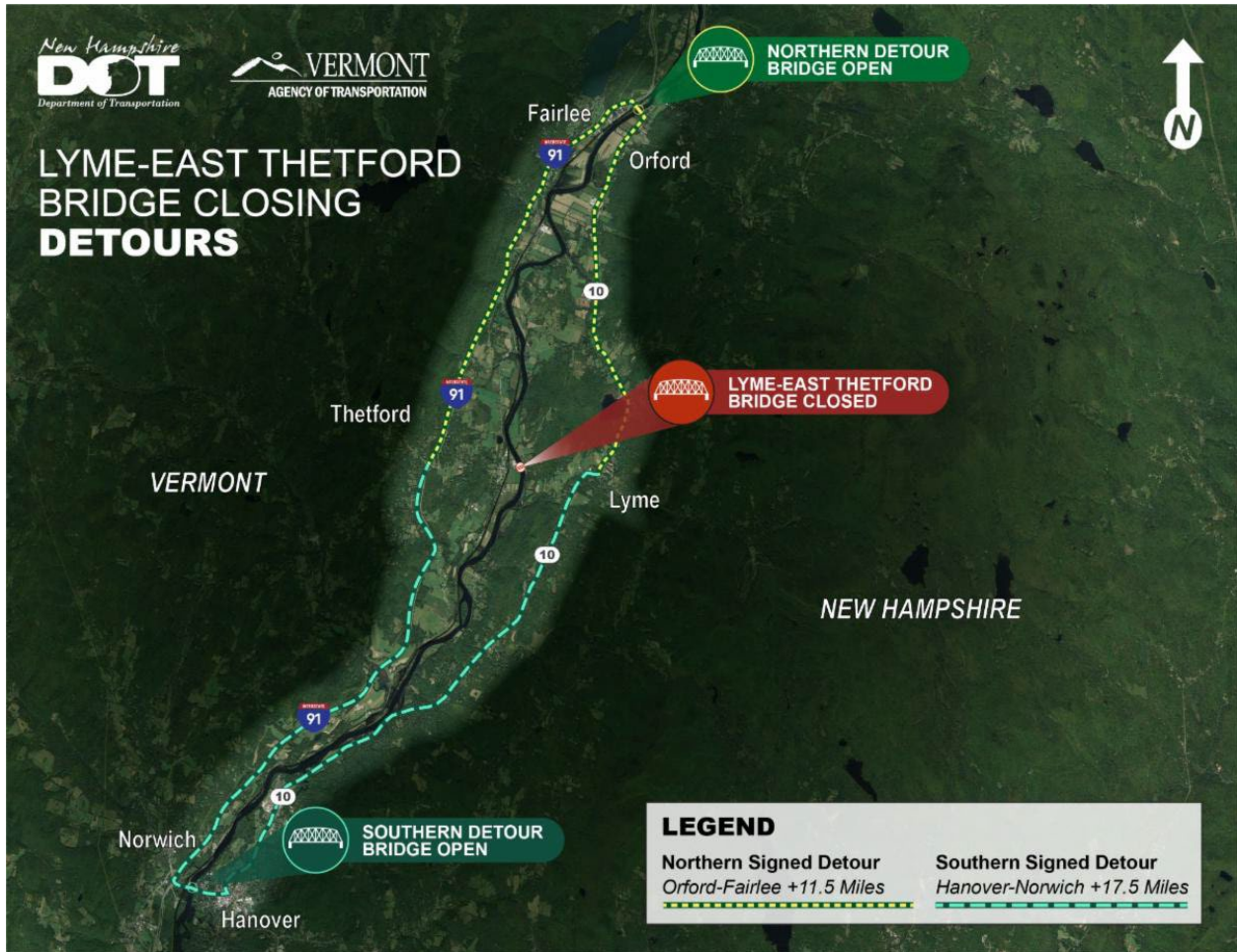


Cofferdam removal

Detour Reminder

Throughout the Lyme-East Thetford bridge closure, two NHDOT signed detour routes are in place. A detour route to the north takes vehicles along NH Route 10, crosses the Connecticut River between Orford, NH, and Fairlee, VT, and continues along Interstate 91 south in Vermont. The other detour route to the south takes vehicles along NH Route 10, crosses the Connecticut River between Hanover, NH, and Norwich, VT, and continues along Interstate 91 north in Vermont.

Businesses on either side of the bridge remain open for business!



Have Questions? Reach out to the Project Team!

If there is anything project-related that you would like to know, please reach out to the project team. The project email address can be found below or on the [project website](#).

Contact Us

info@LymeThetfordbridge.com

[Project Website](#)